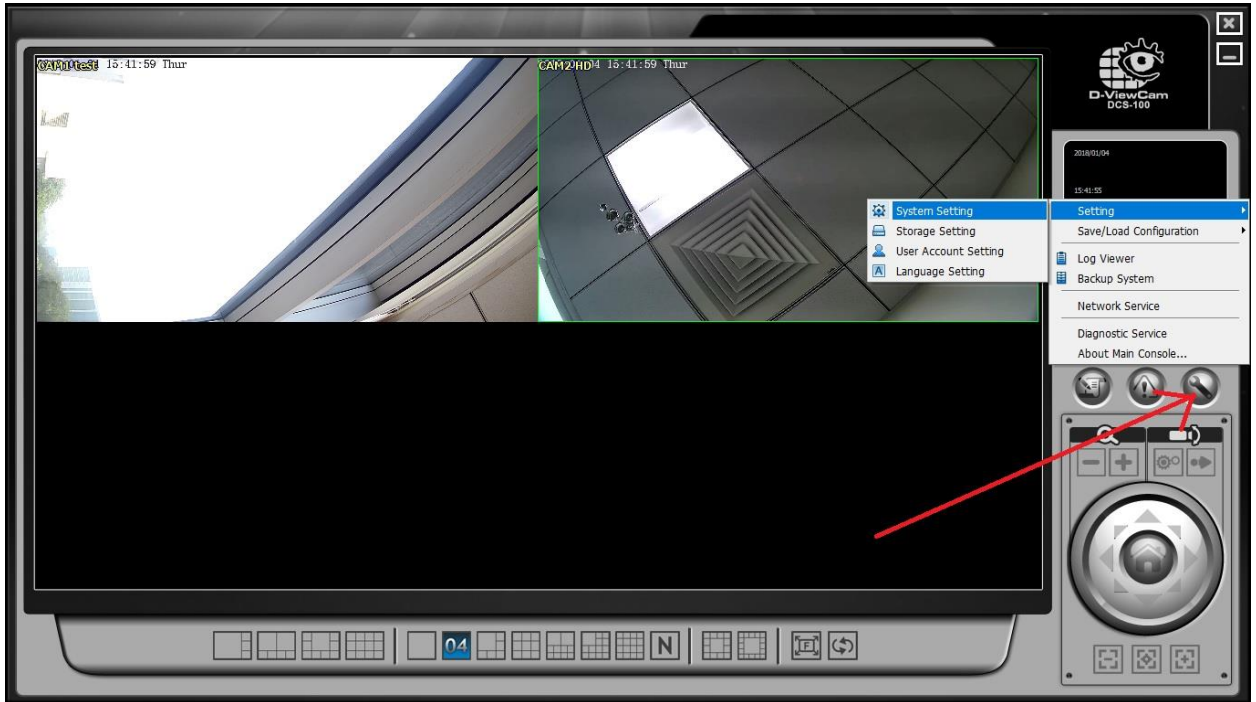
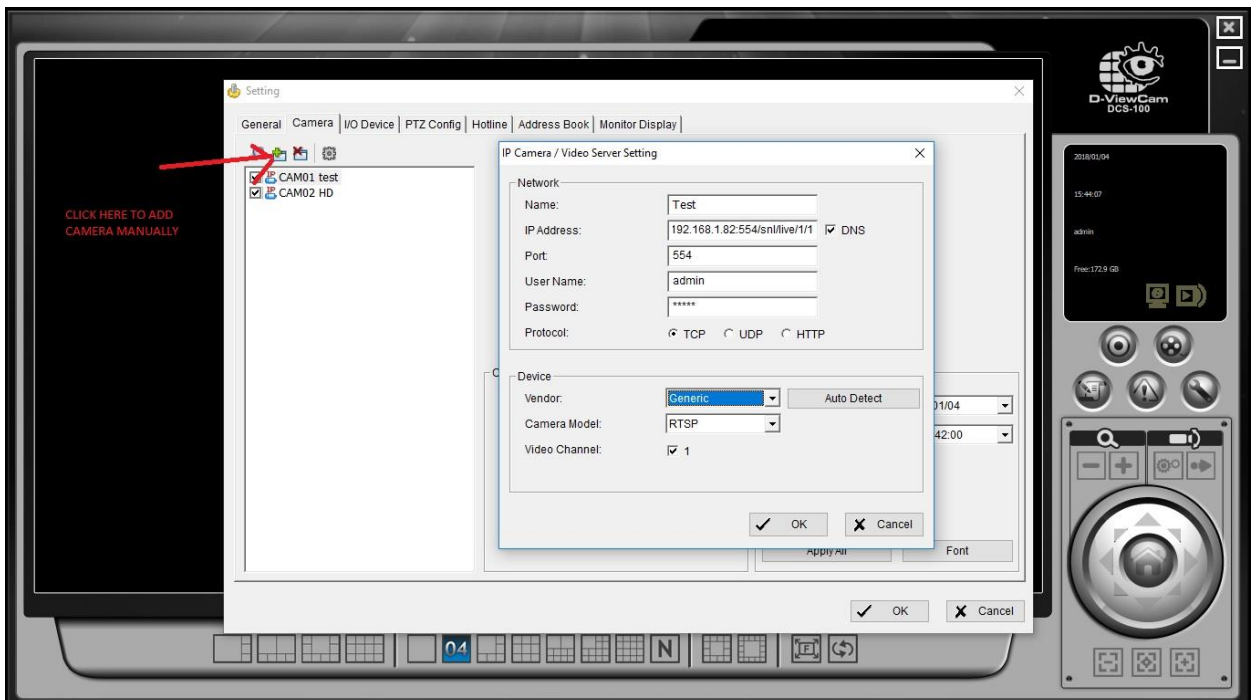


**Procedure to add new DLink cameras to D-view:**

- 1) Install the new DLink D-View Cam Software
- 2) Make sure that the cameras are in the same network
- 3) Open Dlink D-view Cam and Click on Settings >> System Settings



- 4) Click to Add the Camera manually



- 5) Put a tick on DNS and enter 'rtsp://IPAddress:554/snl/live/1/1' in IP Address. Enter the details as given in image above and Click on OK
- 6) The Camera will get added to Dview and you will be able to view the Live Video feed.