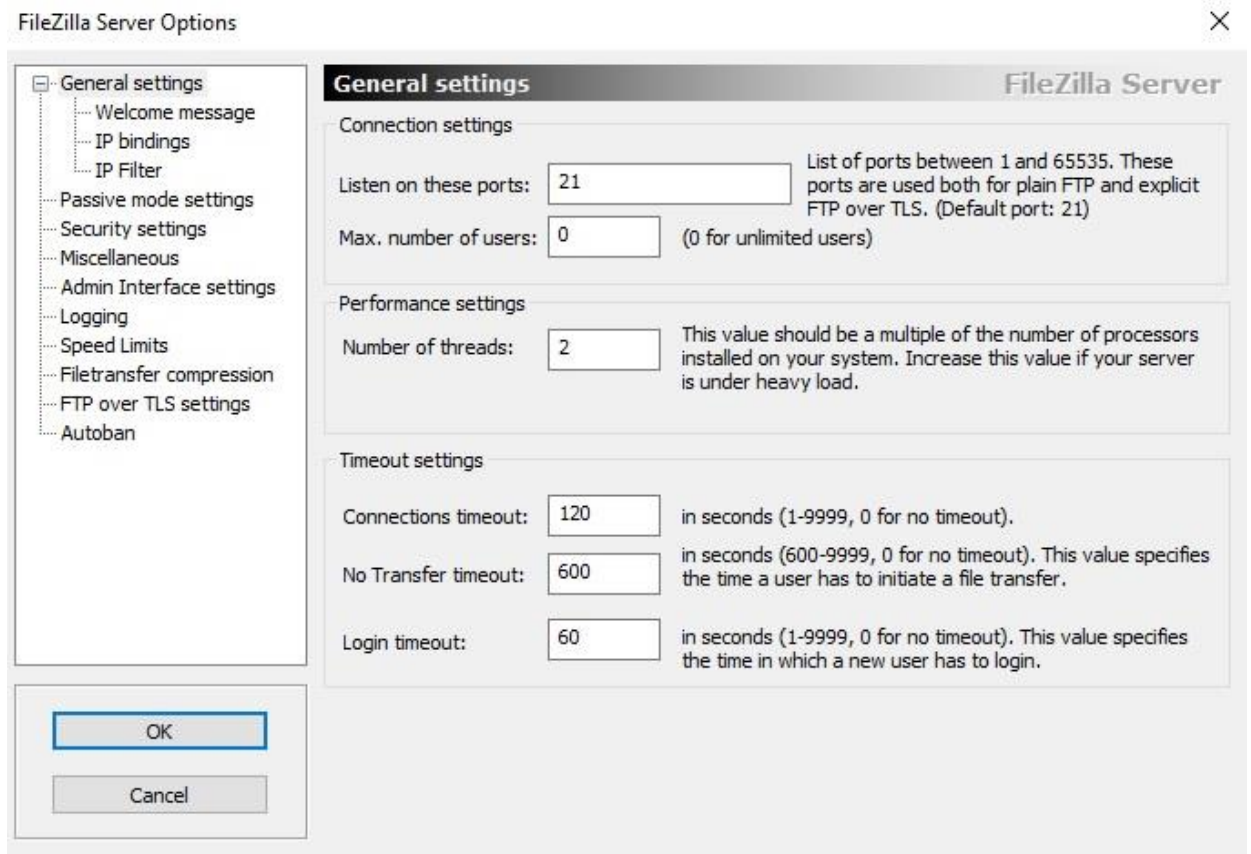


# How to Configure FTP on D-Link F-series IPC & NVRs.

1. Download and Install any FTP Server Software, like Filezilla, to setup FTP on your PC
2. Setup the FTP server by assigning Port as 21/2121 and then creating a User and assigning Shared Folder



The image shows a screenshot of the FileZilla Server Options dialog box, specifically the General settings tab. The dialog box has a title bar that says "FileZilla Server Options" and a close button (X) in the top right corner. On the left side, there is a tree view showing the following categories: General settings (expanded), Welcome message, IP bindings, IP Filter, Passive mode settings, Security settings, Miscellaneous, Admin Interface settings, Logging, Speed Limits, Filetransfer compression, FTP over TLS settings, and Autoban. The main area of the dialog is titled "General settings" and "FileZilla Server". It is divided into three sections: Connection settings, Performance settings, and Timeout settings. In the Connection settings section, "Listen on these ports:" is set to 21, and "Max. number of users:" is set to 0. In the Performance settings section, "Number of threads:" is set to 2. In the Timeout settings section, "Connections timeout:" is set to 120, "No Transfer timeout:" is set to 600, and "Login timeout:" is set to 60. At the bottom left, there are "OK" and "Cancel" buttons.

FileZilla Server Options

**General settings** FileZilla Server

Connection settings

Listen on these ports:  List of ports between 1 and 65535. These ports are used both for plain FTP and explicit FTP over TLS. (Default port: 21)

Max. number of users:  (0 for unlimited users)

Performance settings

Number of threads:  This value should be a multiple of the number of processors installed on your system. Increase this value if your server is under heavy load.

Timeout settings

Connections timeout:  in seconds (1-9999, 0 for no timeout).

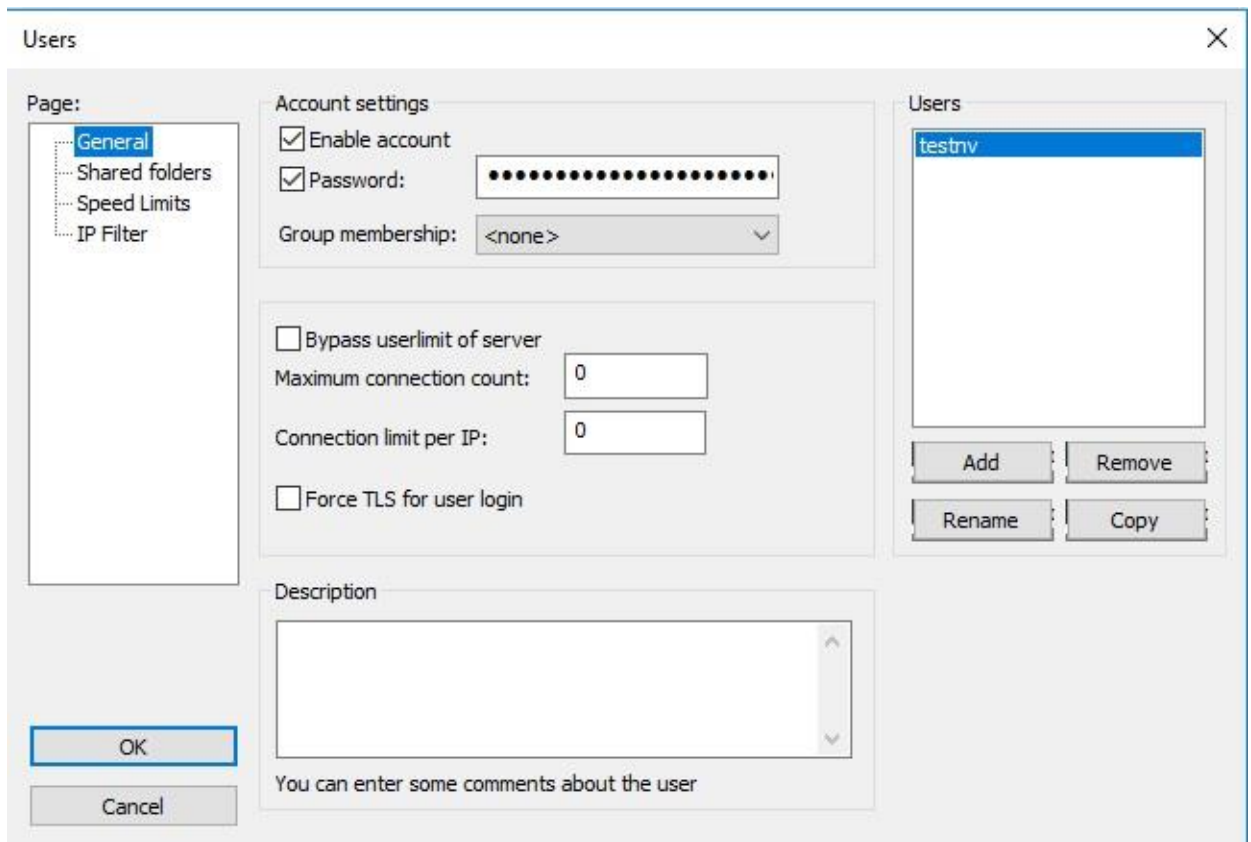
No Transfer timeout:  in seconds (600-9999, 0 for no timeout). This value specifies the time a user has to initiate a file transfer.

Login timeout:  in seconds (1-9999, 0 for no timeout). This value specifies the time in which a new user has to login.

OK

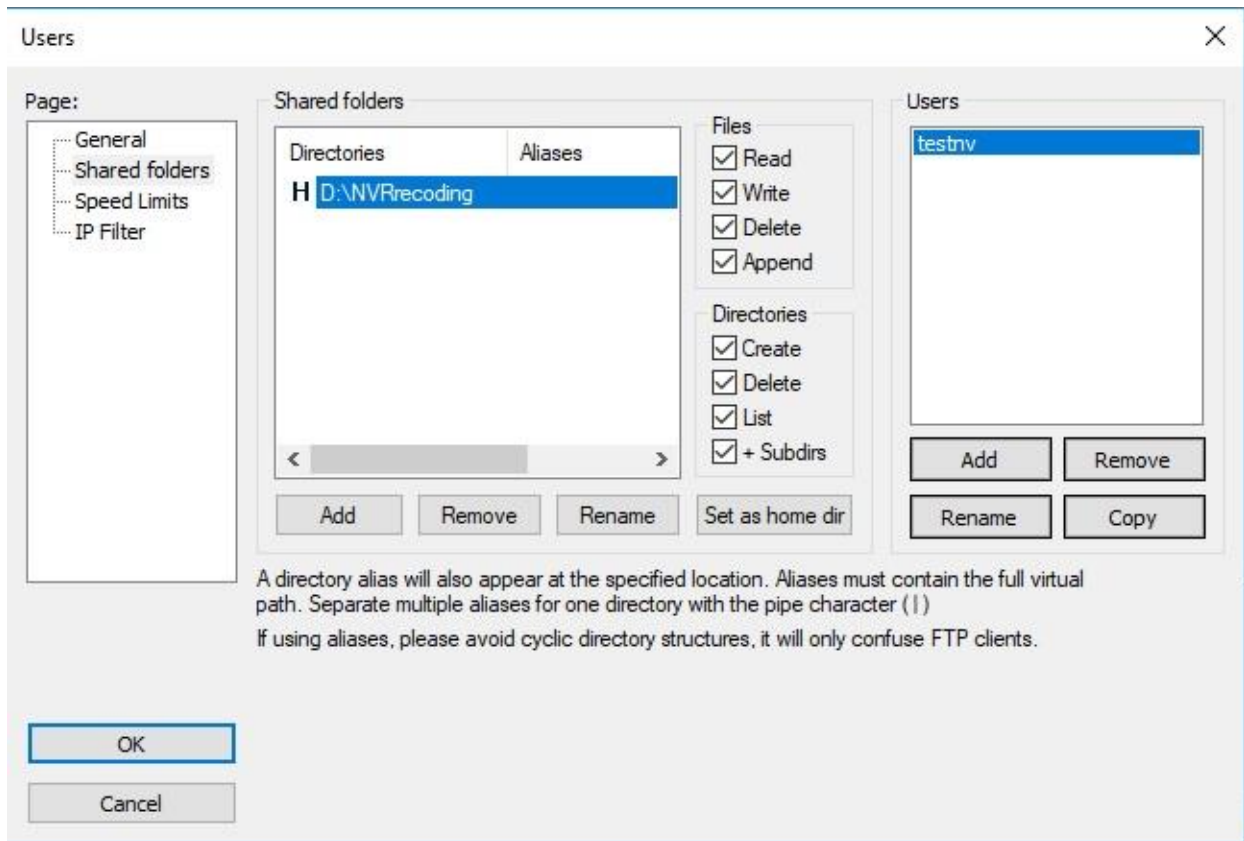
Cancel

While creating a User, make sure you remember the Username and Password assigned as same will have to be entered on the NVR/IPC FTP settings.



Add a location to save share files over FTP and grant it all permission.

Check the image below.



3. Now access the page of the NVR/IPC with the IP address assigned to the NVR/IPC
4. Click on Configuration >> Network Service >> FTP
5. Enable FTP and enter the details of the FTP server hosted on the PC on the FTP settings page on the NVR/IPC.

FTP Upload ON

FTP Address

FTP Port

Account

Password

FTP Path

Image Quality

Click on Apply after saving settings.

6. Configure the motion detection settings on the NVR/IPC.
7. To open Motion Detection Click on Configuration>>Alarms>>Motion Detection

**Motion Alarm**

2018-01-18 19:47:53 Tues

Enable

Alarm Interval(1-1800S)

Sensitivity

Output Channel

Alarm Record

SMTP

FTP Upload

Clear

	0	1	2	3	4	5	6	7	8	9	10	11	12	13	14	15	16	17	18	19	20
Sun																					
Mon																					
Tues																					
Wed																					
Thur																					
Fri																					

Refresh Apply

Click on Apply to Save Changes.

8. You will start image notifications in the FTP folder assigned when motion is detected by the IPC

*Finish*